

2ND FLOOR

● **East**
4,359 Sq Ft / 405 Sq M

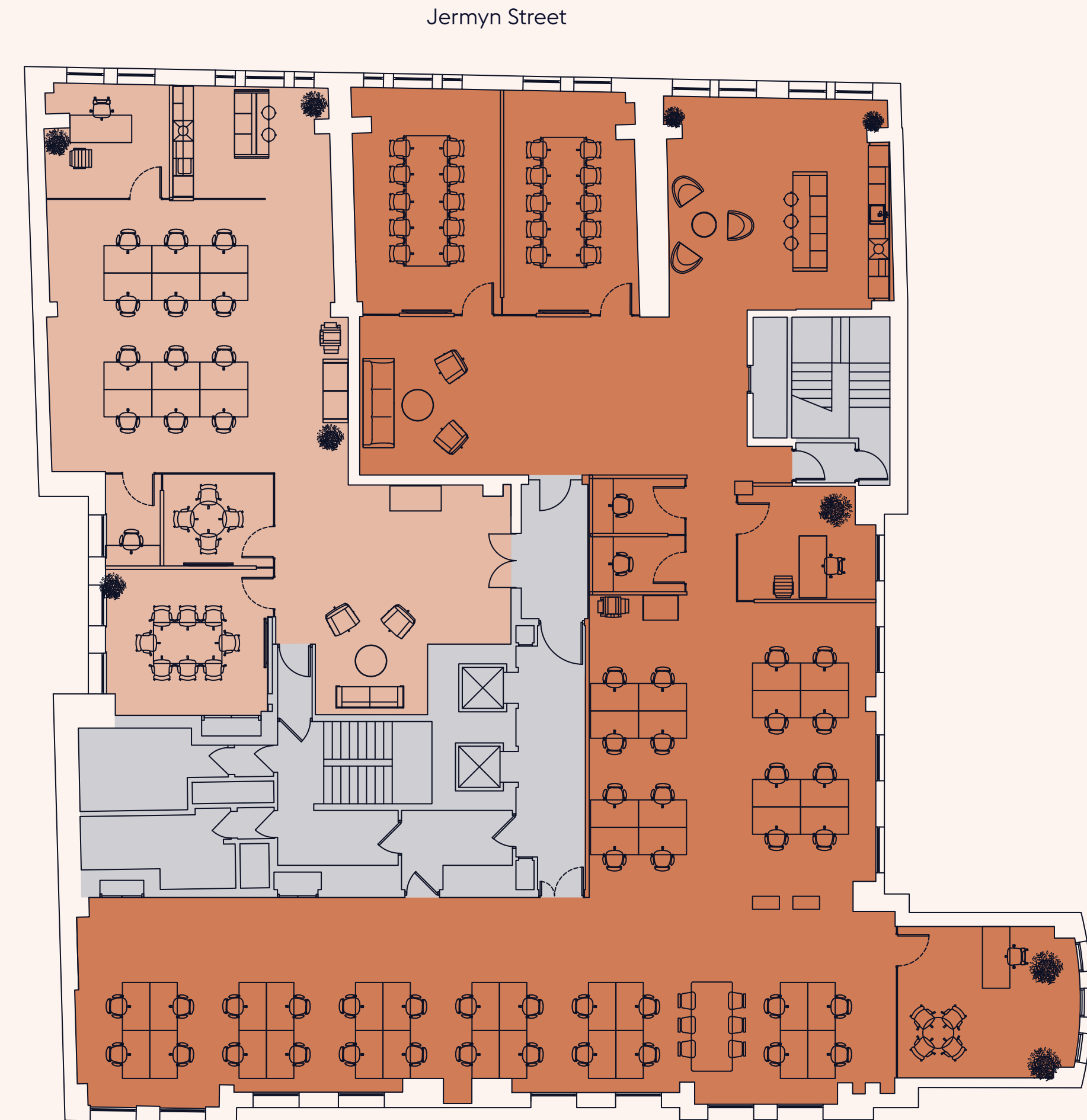
| | | | |
|-------------------------|----|------------------------|-------------------|
| Workstations | 40 | Waiting area | 1 |
| Private office | 2 | Tea point / breakout | 1 |
| 10 person meeting rooms | 1 | Occupancy total | 42 |
| Quiet pods | 2 | Occupancy ratio | 1:9.6 Sq M |

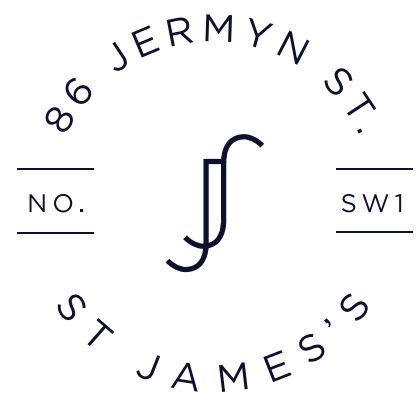
● **West**
1,856 Sq Ft / 172 Sq M

| | | | |
|------------------------|----|------------------------|--------------------|
| Workstations | 12 | Waiting area | 1 |
| Private office | 1 | Tea point / breakout | 1 |
| 8 person meeting rooms | 1 | Occupancy total | 13 |
| 4 person meeting rooms | 1 | Occupancy ratio | 1:13.2 Sq M |
| Quiet pods | 1 | | |



For indicative purposes only.
Not to scale.





3RD FLOOR

●
North
3,414 Sq Ft / 317 Sq M

| | |
|-------------------------|-------------------|
| Workstations | 24 |
| Private office | 2 |
| 12 person meeting rooms | 1 |
| 8 person meeting rooms | 1 |
| Quiet pods | 1 |
| Waiting area | 1 |
| Tea point / breakout | 1 |
| Occupancy total | 42 |
| Occupancy ratio | 1:9.6 Sq M |



For indicative purposes only.
Not to scale.

